

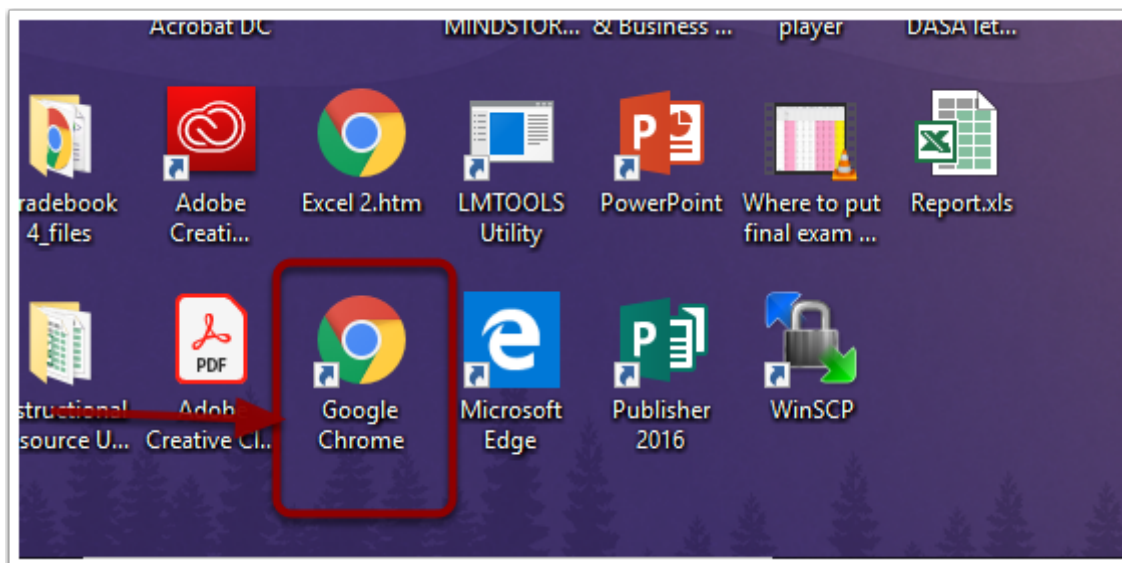
# Accessing Student Resources From Home

## Accessing Student Resources From Home

When accessing student resources from home, the student must be logged into Chrome and Google with their school account. When students log into chromebooks at school, they are automatically logged into Chrome. This is not always the case at home.

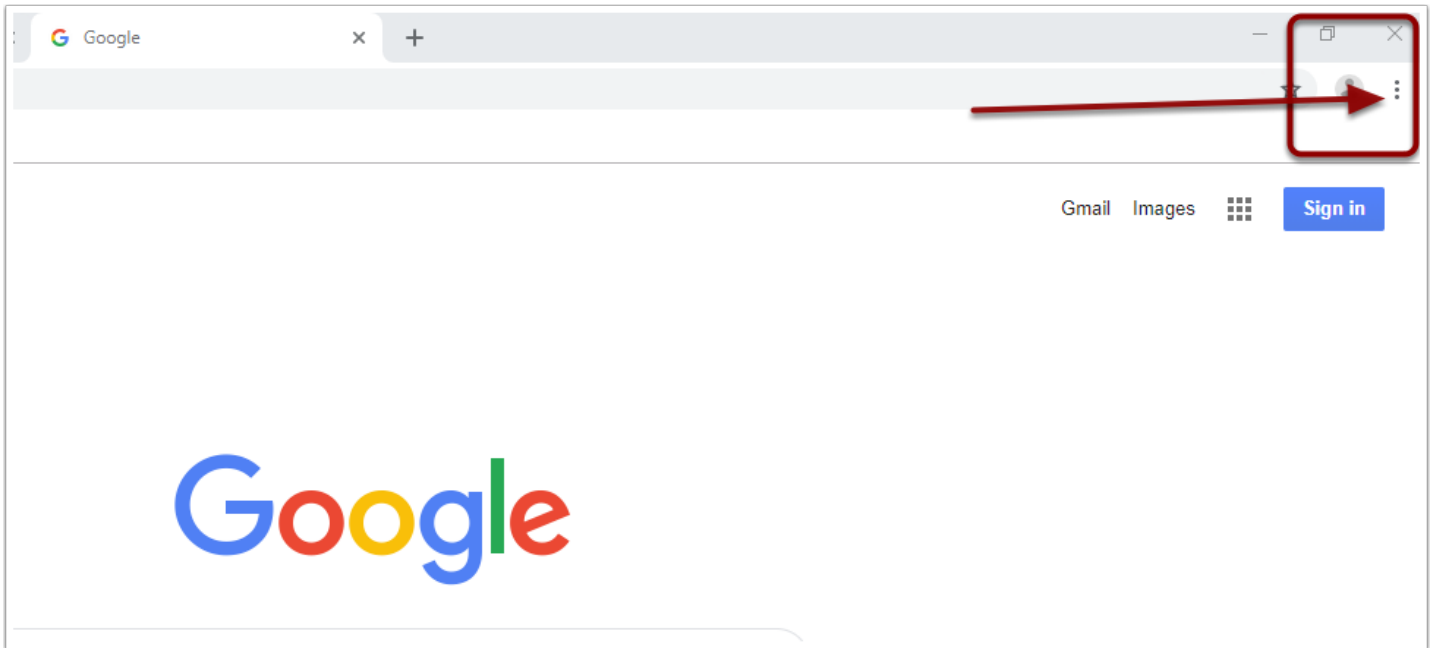
To do so, Follow the steps below:

Open the Chrome Browser

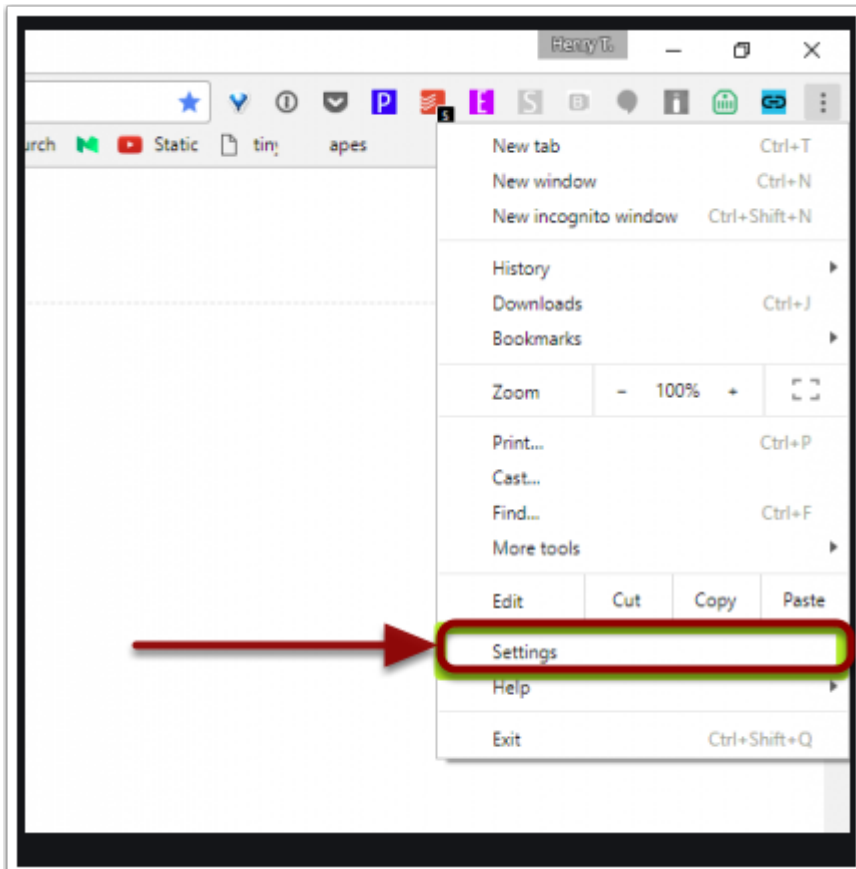


## Open Chrome Settings

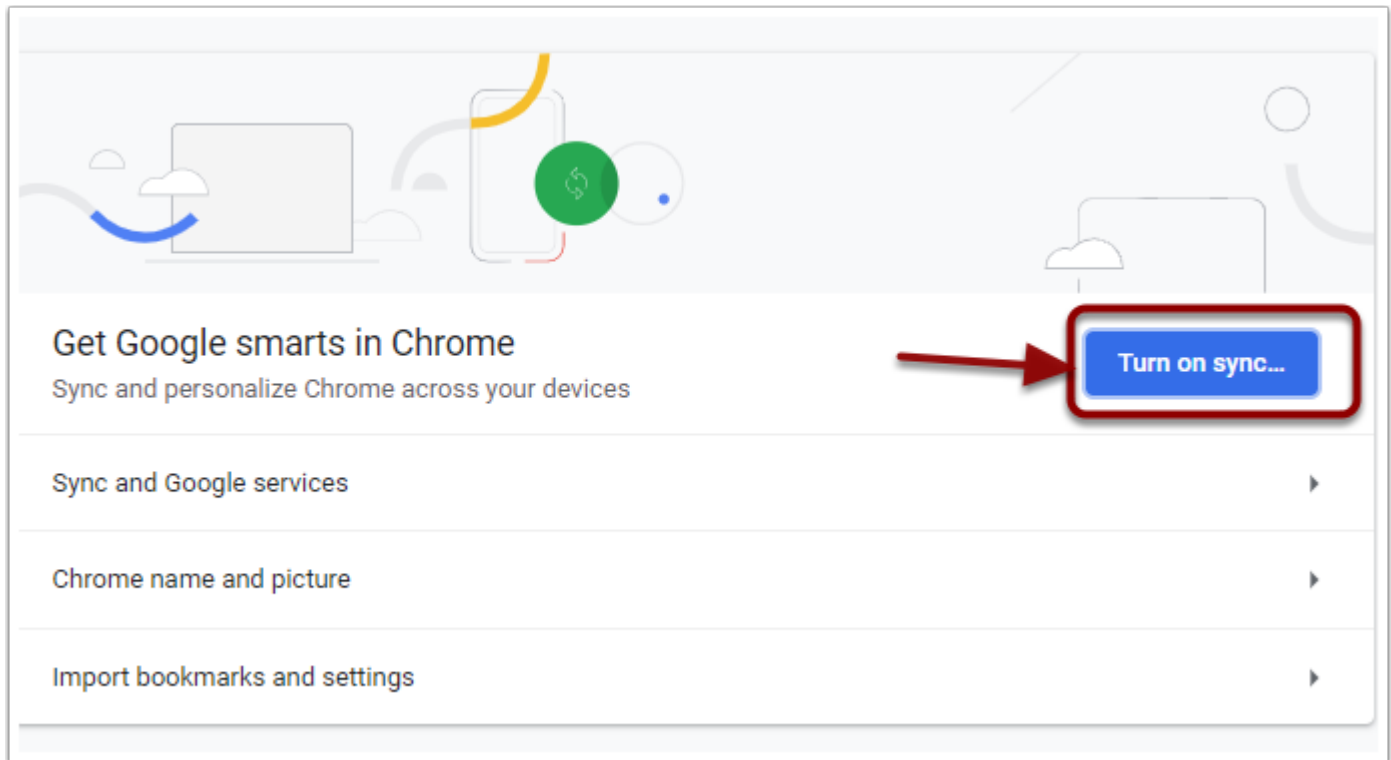
Click the 3 small dots in the upper right of the screen.



## Click SETTINGS



## Turn On Sync



## Log Into Your School Google/Email Account

Example: student@students.wvcsd.org Password would be whatever is used to sign onto the chromebooks at school.

Google

Sign in

Use your Google Account

Email or phone

[Forgot email?](#)

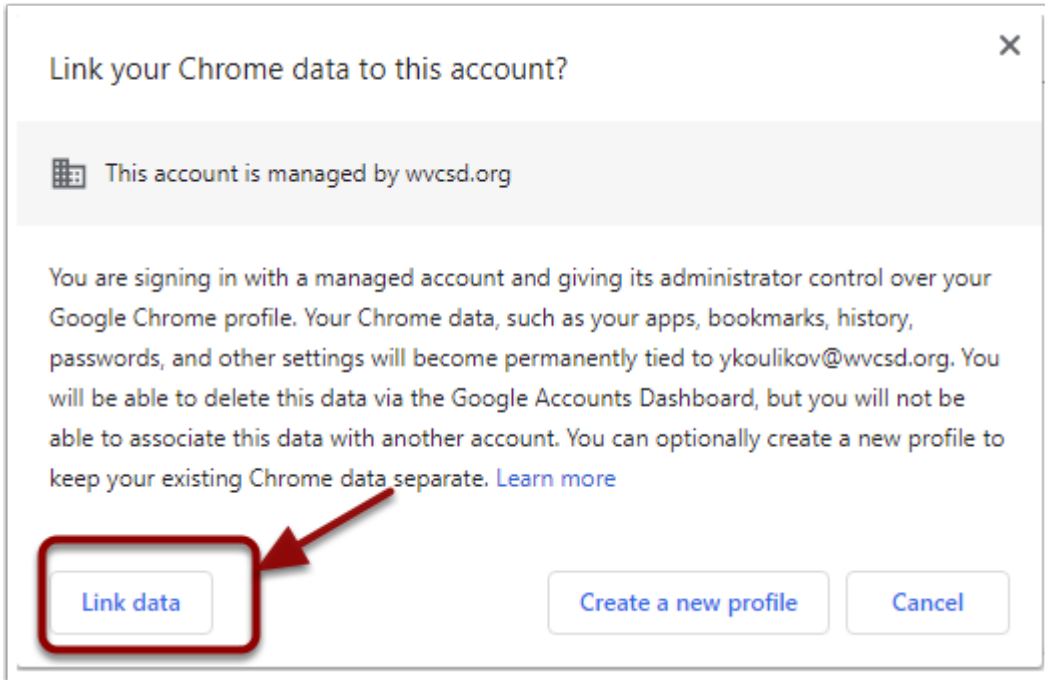
Not your computer? Use Guest mode to sign in privately.  
[Learn more](#)

[Create account](#) [Next](#)

## Link your Chrome data to this account?

Once you enter the school username and password, you should get a pop up that the account is managed by wvcsd.org.

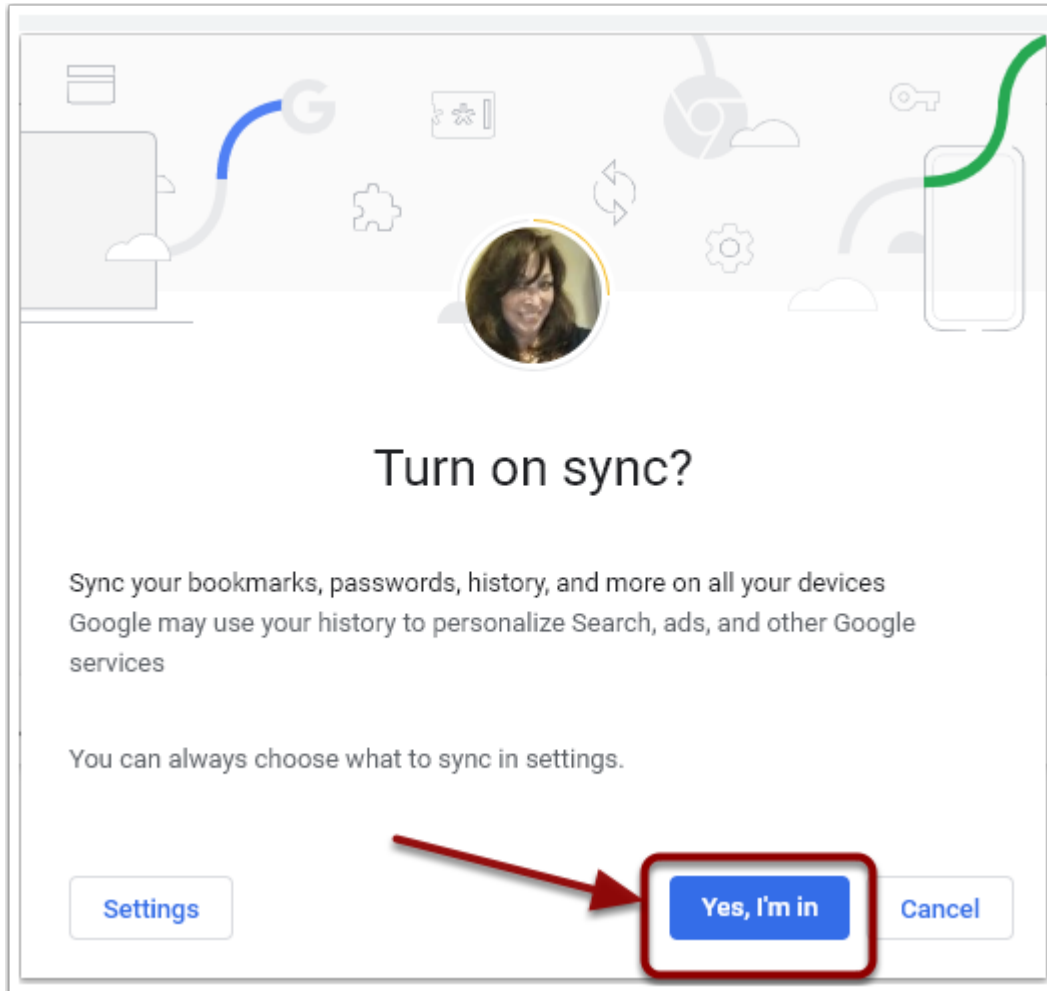
Click LINK DATA



## Turn on Sync

Now you must sync your data . Once you do this, you will not have to repeat this step unless you turn off the sync.

Click "Yes, I'm in"



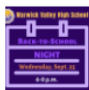
# From your browser, open the Warwick Valley Central School District Website

Click the Student Resources Link

**NEWS and ANNOUNCEMENTS**

[PSATs will be Oct. 19; registration due Oct. 4](#) >  
Attention tenth and eleventh-grade students: The PSAT/NMSQT® (Preliminary SAT/National Merit Scholarship Qualifying Test) will take place Saturday, Oct. 19 at [...]

---


 [Warwick Valley High School will host Back-to-School Night on Sept. 25](#) >  
Parents and guardians of Warwick Valley High School students are invited to join administrators and faculty for the 2019-20 Back-to-School [...]

---

[Board to discuss facility improvement recommendations on Oct. 15](#) >  
The WVCS Board of Education Facilities Committee is continuing to examine the most recent, state-mandated Building Condition Survey to identify [...]

**Superintendent of Schools**  
**Dr. David Leach**  
P.O. Box 595  
Warwick, NY 10990  
(845) 987-3000

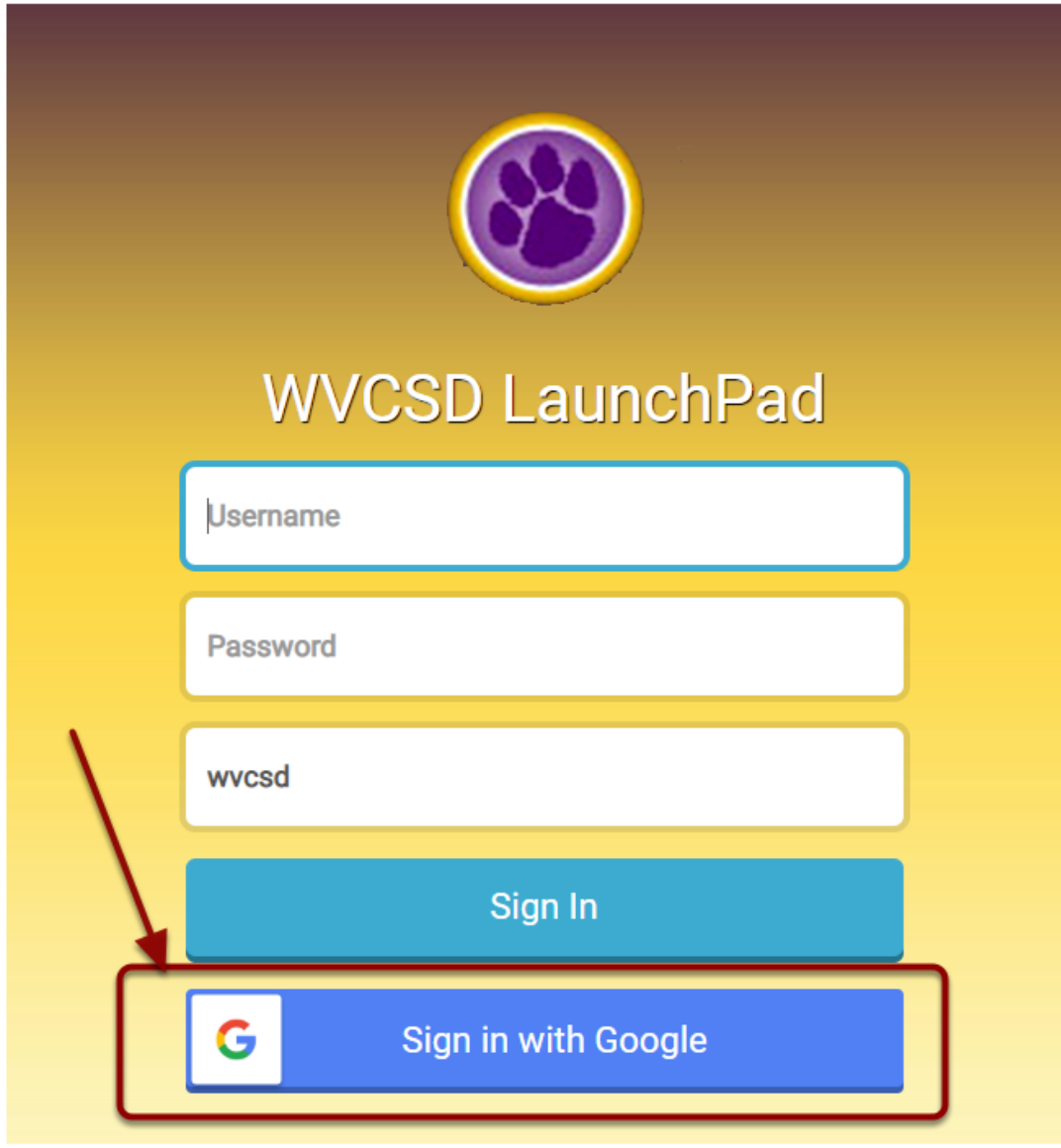
**QUICK LINKS**

- [SUPERINTENDENT'S SPOTLIGHT](#)
- [LUNCH MENU](#)
- [STUDENT RESOURCES](#) 
- [REGISTER A STUDENT](#)
- [COMMUNITY E-BULLETIN](#)

## WVCSD LaunchPad Log In

DO NOT enter a username and password.

Click Sign in with Google



The image shows a login interface for WVCSD LaunchPad. At the top center is a purple paw print icon inside a yellow circle. Below it, the text "WVCSD LaunchPad" is displayed in white. There are three input fields: "Username", "Password", and "wvcsd". Below the input fields are two buttons: a blue "Sign In" button and a blue "Sign in with Google" button. The "Sign in with Google" button features the Google logo on the left. A red arrow points to the "Sign in with Google" button, and a red rectangular box highlights it.



## The Warwick Valley CSD Resource Page

Here you will find all of the resources that are available to the student.

Click on any of the resources and you will be automatically logged into that resource.

